

Exclusive  
Bathroom Collection

 LA TERRA

## Gurudev Enterprise

Plot No.27, Opp.Variya Prajapati  
Bhojanshala, Ravjibhagat Marg,  
Thangadh - 363 530 (Guj. - India)  
Email : glassputty2020@gmail.com

 LA TERRA



CATALOGUE 2020

# COMPANY PROFILE

Dear Colleagues & Partners/ Well-Wishers,

We are feeling very happy to introduce our new venture Gurudev Enterprise “LA TERRA” with wide range of Sanitaryware Products.

LA TERRA Sanitary ware is a modernized international enterprise integrated with R&D, manufacturing, sales and service. We have a complete Sales Strategy and efficient sales team, applying brand strategy, setting up enterprise image, and being the Advocator and Pioneer in the field of world class sanitary ware.

Keep improving and striving for excellence is the core strategy to our quality requirement. The company is devoting itself to exploring deeper on global sanitary ware, so as to provide high-quality products and sincere, sophisticated service to the whole society and customers, to build up the better life for all humans.

## Manufacturing Facility

Our use of innovative manufacturing technologies means that we are able to create excellent quality sanitary ware products in the latest designs at extremely competitive prices.

LA TERRA sanitary ware is a company that has big scale, high technology and a variety of products. It has over 20 series of sanitary wares including Table Top basin, wall-hung toilet, one-piece toilet, pedestal basin, wall-hung basin, urinal.

From design to manufacturing, we only use the most technologically advanced materials and processes. This has ensured our position as market-leader and innovative creators of sanitary and bathroom wares.

## Quality

Our company has established cooperative relationship with foreign countries, that introduce advanced technology and management from Spain and Italy for reaching the international advanced standards of performance.



# CONTENTS

- ☐ One piece Closet
  - ☐ Wall Hung Closet
- ☐ Table Top
  - ☐ Wash Basin Pedestal
- ☐ Wash Basin Half Pedestal
  - ☐ Wash Basin
- ☐ Counter Basin
  - ☐ Water Closet
- ☐ Pan & Urinal
  - ☐ Designer Wash Basin Pedestal
- ☐ Designer Table Top





**IRIS**  
Size : 610x345x110



**ROTTA**  
Size : 520x375x115 mm



**CUTE**  
Size : 430x320x145 mm



**AUDI**  
Size : 600x380x125 mm



**LEVISH**  
Size : 615x385x140 mm



**LIBRA**  
Size : 460x340x130 mm



**RECTA**  
Size : 410x310x150 mm



**CANON**  
Size : 400x400x135 mm



**ASTA**  
Size : 410x410x120 mm



**CANTO**  
Size : 320x490x135 mm



**MILANO**  
Size : 425x280x145 mm



**SWISS**  
Size : 370x270x140 mm



**CERON**  
Size : 730x685x345 mm  
S-Trap Wall Distance - 225 mm



**CEMEO**  
Size : 745x680x370 mm  
S-Trap Wall Distance - 225 mm



**SPICE**  
Size : 720x655x355 mm  
S-Trap Wall Distance - 225 mm



**CLLIPER**  
Size : 740x640x345 mm  
S-Trap Wall Distance - 225 mm



**VITO**  
Size : 655x350x710 mm  
S-Trap Wall Distance - 225 mm



**ARIDO**  
Size : 700x400x690 mm  
S-Trap Wall Distance - 255 mm





**ROLLZA**

Size : 520x355x330 mm  
P-Trap Wall Distance - 130 mm



**NEON**

Size : 540x330x350 mm  
P-Trap Wall Distance - 130 mm



**LIMCA**

Size : 400x350x120 mm



**EVA**

Size : 465x320x105 mm



**TITAN**

Size : 450x350x325 mm



**LIZA**

Size : 525x340x350 mm



**STEPHI MINI**

Size : 465x350x340 mm



**RAPID**

Size : 415x335x130 mm



**LOZANO**

Size : 555x380x120 mm



**ROYAL**

Size : 000x000x000 mm



**CRYSTAL**

Size : 000x000x000 mm



**LIMCA**

Size : 415x335x130 mm



**SENTO**

Size : 605x400x135 mm



**PLUTO**  
Size : 420x400x280 mm



**VANITY**  
Size : 610x470x190 mm



**SIPLA**  
Size : 000x000x000 mm



**OMAN**  
Size : 000x000x000 mm



**MINTO**  
Size : 425x290x140 mm



**LENIS**  
Size : 000x000x000 mm



**MATRIX**  
Size : 400x200x125 mm



**NEO**  
Size : 000x000x000 mm



**CROMA**  
Size : 470x360x125 mm



**LUCA**  
Size : 560x400x120 mm



**CORNER**  
Size : 430x430x210 mm



**DELTA CORNER**  
Size : 350x350x130 mm



**LEXO**  
Size : 830x310x340 mm



**VENUE**  
Size : 860x425x125 mm



**DAYANA**  
Size : 875x460x570 mm



**NOVA**  
Size : 895x580x490 mm



**DOLPHIN**  
Size : 870x545x455 mm



**STUDIO**  
Size : 846x610x475 mm



**PARIS**  
Size : 875x580x430 mm



**SQUARE**  
Size : 850x585x450 mm





**SOFI**  
Size : 910x630x475 mm



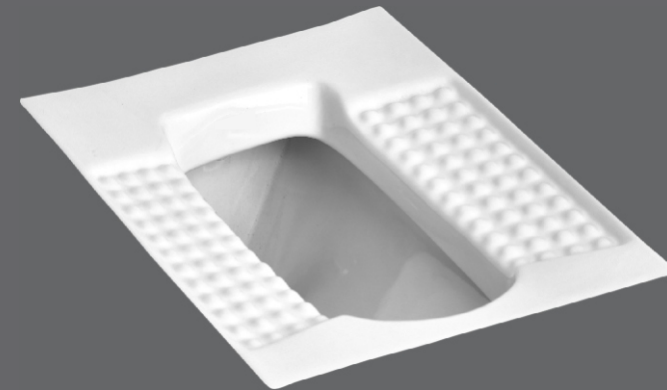
**OPAL**  
Size : 880x580x440 mm



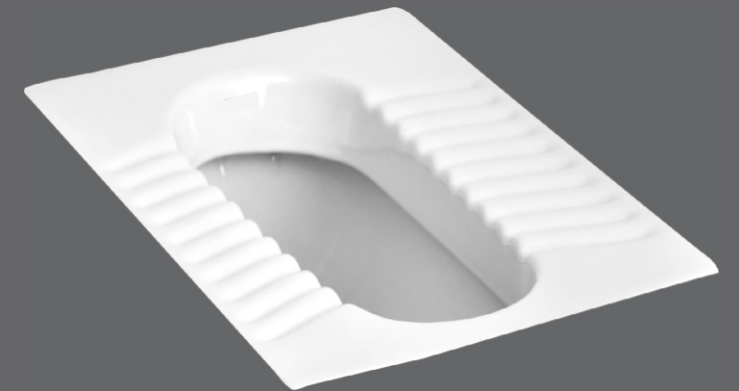
**SERENA**  
Size : 895x610x470 mm



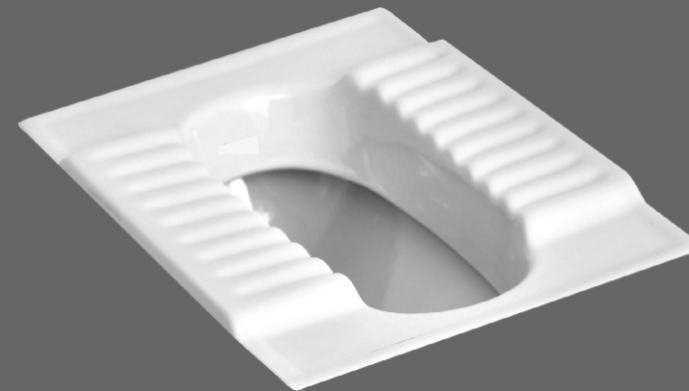
**COSMO**  
Size : 850x610x425 mm



**AQUA PAN 23"**  
Size : 580x455x290 mm



**ORISSA PAN 20"**  
Size : 535x435x280 mm



**CITY PAN 20"**  
Size : 530x425x155 mm



**ORISSA PAN 23"**  
Size : 605x460x310 mm



**Square EWC - S & P**  
Size : 545x360x410 mm



**EWC-S & P**  
Size : 520x370x420 mm



**ANGLO INDIAN-S & P**  
Size : 590x455x415 mm



**CONCEALED**  
Size : 555x365x405 mm

Urinal



**LARGE URINAL**  
Size : 600x365x400 mm



**SMALL URINAL**  
Size : 395x285x310 mm



**SQUATTING URINAL**  
Size : 450x365x105 mm



**S-trap**  
Size : 515x410x175 mm



**P-trap**  
Size : 600x410x390 mm

Available Color



White



Ivory

**Note :** Above printed colours may differ from colours of ceramic because printing limitations. For true selection, refer to actual sample or shade board.  
Continuous innovation and improvement in manufacturing techniques and products are carried out regularly. We reserve the right to supply articles which may not correspond exactly with the particulars given in this catalogue.

DESIGNER  
COLLECTION





VENUE - 01



VENUE - 02



VENUE - 03



VENUE - 04



VENUE - 05



VENUE - 06



VENUE - 07



VENUE - 08



VENUE - 09



VENUE - 010



VENUE - 011



VENUE - 012





DOLPHIN - 01



DOLPHIN - 02



DOLPHIN - 03



DOLPHIN - 04



DOLPHIN - 05



DOLPHIN - 06



DOLPHIN - 07



DOLPHIN - 08



DOLPHIN - 09



DOLPHIN - 010



DOLPHIN - 011



DOLPHIN - 012



DOLPHIN - 013



DOLPHIN - 014



PARIS - 01



PARIS - 02



PARIS - 03



PARIS - 04



PARIS - 05





CROMA - 01



CROMA - 02



CROMA - 03



LEVIS - 01



LEVIS - 02



LEVIS - 03



CANTO - 01



CANTO - 02



CANTO - 03



LIBRA - 01



LIBRA - 02



LIBRA - 03



IRIS - 01



IRIS - 02



IRIS - 03



IRIS - 04



ASTA - 01



LIMCA - 01





CUTE - 01



CUTE - 02



CUTE - 03



CUTE - 04



CUTE - 05



CUTE - 06



CUTE - 07



CUTE - 08



CUTE - 09



CANON - 01



CANON - 02



CANON - 03



AUDI - 01



RECTA - 01

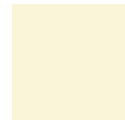
COLOUR  
RANGE

LA TERRA



White

Running Colour



Ivory



Pink



Grey



T. Blue



P. Green

Special Colour



Magenta



Alp. Blue

Super Sp. Colour



Burgundy

Exclusive Colour

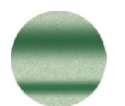


Orange



Red

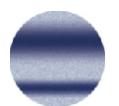
Rustic Colour



O. Green



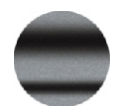
R. Brown



Alp. Blue



Magenta



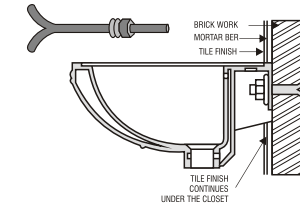
Black

**Note :** Above printed colours may differ from colours of ceramic because of printing limitations. For true selection, refer to actual sample or shade board.

Continuous innovation and improvement in manufacturing techniques and products are carried out regularly. We reserve the right to supply articles which may not correspond exactly with the particulars given in this catalogue.

A classic never goes out of style

Installation Instruction



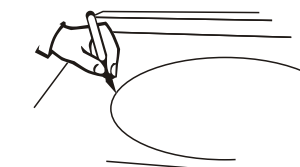
WALL HUNG BASIN

As per shown in the picture, the rag bolt must be grouted into the cement/concrete wall. The bolts must be fixed to the cement/concrete wall. Allow setting & checking than install it using nut and washer.

COUNTER WASHBASIN

At the beginning

1. A skilled or experienced person should install counter lavatories.
2. Avoid using adhesive with this product.
3. Check the waste area and supply tubing if required.
4. Do not open the lavatory from its protective carton until you are ready for installation.
5. Please follow all local building and plumbing codes.



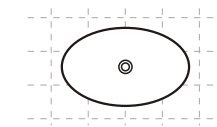
MATERIAL & TOOLS

Measure tape, Keyhole or saber saw, Hammer, Glasses, Rags or Paper toweling, Drill (1/2 dia, drill bit or larger), Pencil, sealant, sharp knife or scissors.

INSTALLATION OF LAVATORY

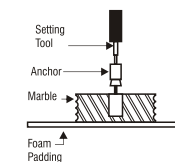
Please Note : Please install it in a way that future removal from underneath the counter top is possible without damaging the counter top.

1. Please check the desired location for clearance between the back splash, faucet, Fixture and cabinet.
2. Please cut the template.
3. Please carefully trace the template on the counter top directed.
4. Please mark the faucet hole centerline on the counter top.
5. Please drill a 1/2" pilot on the inside of the cut line.



For Wood Counter tops:

1. Mark and pre-drill the wood screw holes at the locations shown on the template.
2. Waterproof any exposed areas of wood.



For Marble Counter tops:

1. Position the counter top upside down on foam padding to protect the surface. Mark and drill 3/6" holes 5/8" deep at the locations shown on the template.
2. Use a setting tool and hammer to secure the anchors.

For All Installations:



1. If the counter top has not been installed, install it at this time.
2. Drill the faucet holes according to the faucet installation instructions.
3. Install the faucet to the counter top according to the manufacture's instructions.
4. Install the drain to the lavatory according to the manufacture's instructions.

LA TERRA